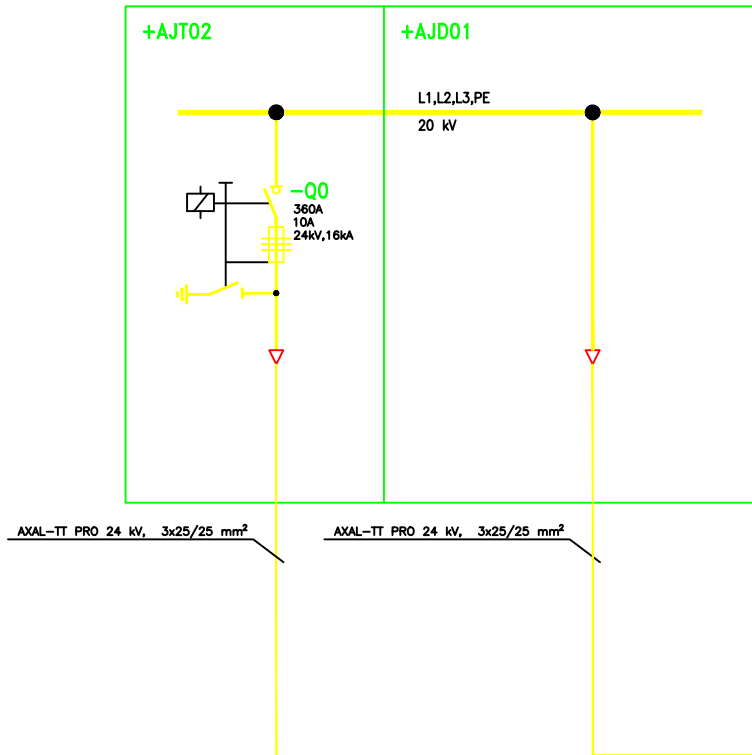
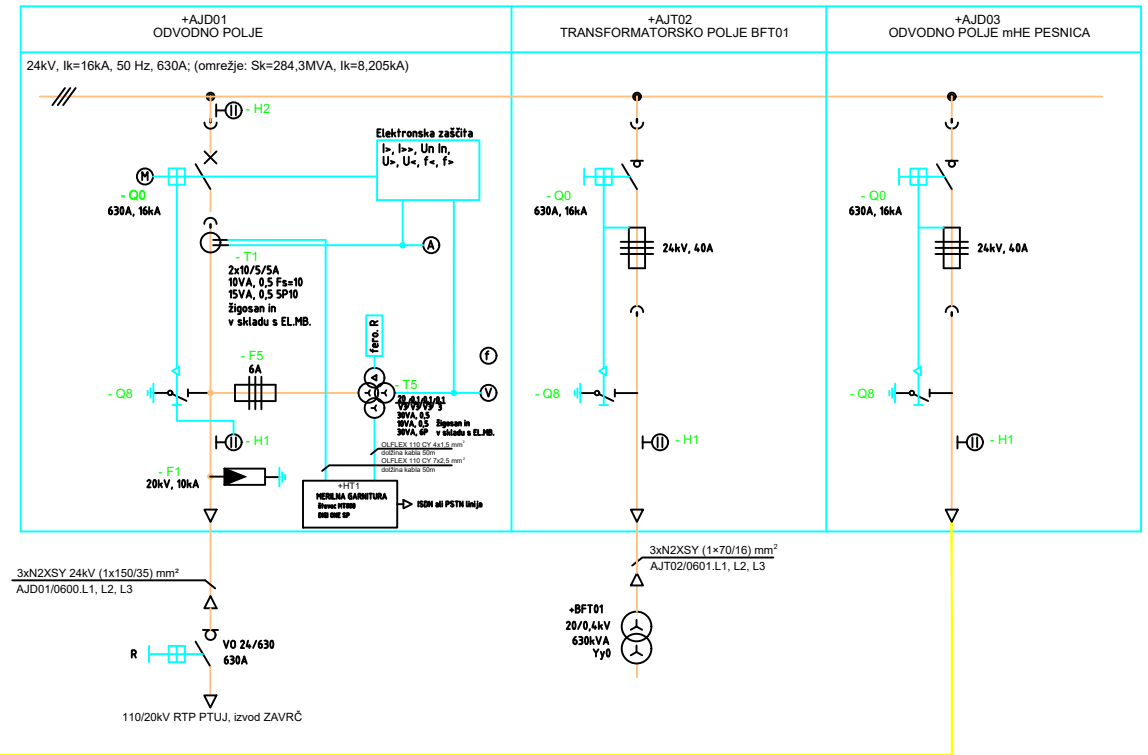


20kV stikališče mHE Pesnica
20kV switchgear in the Pesnica SHPP

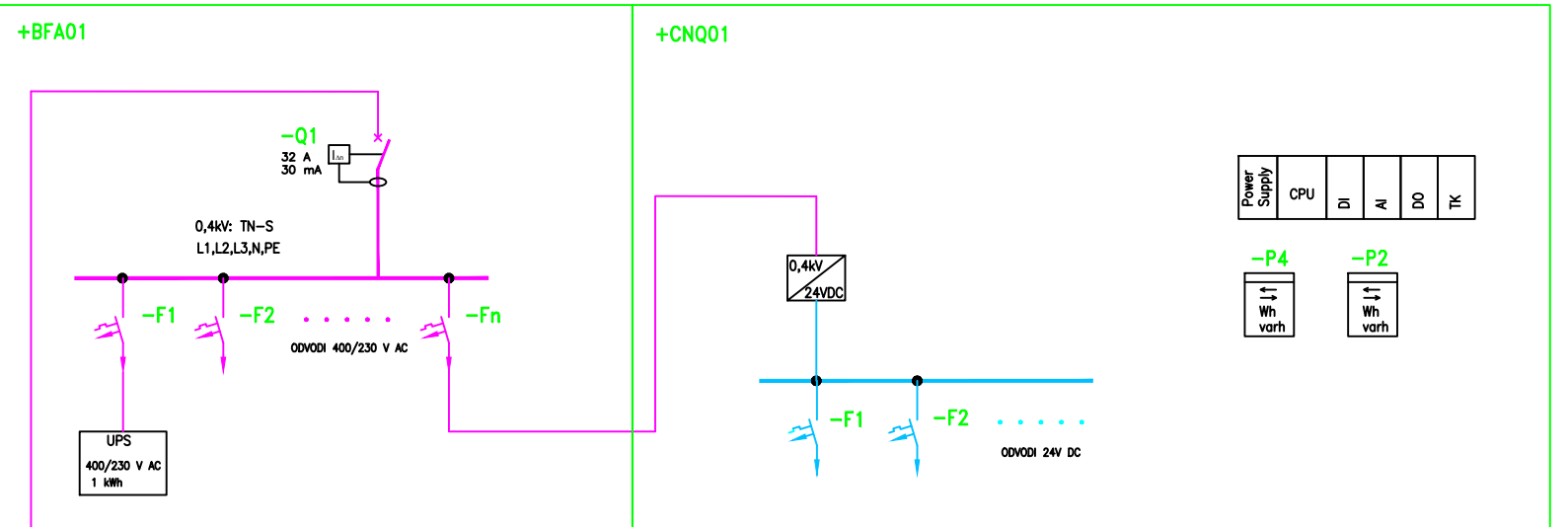


20kV stikališče v HE Formin
20kV switchgear in the Formin HPP

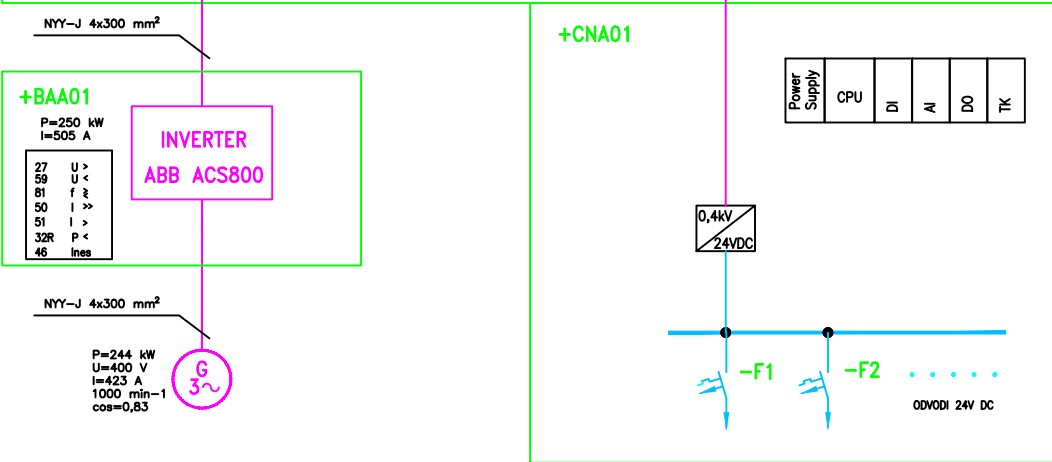
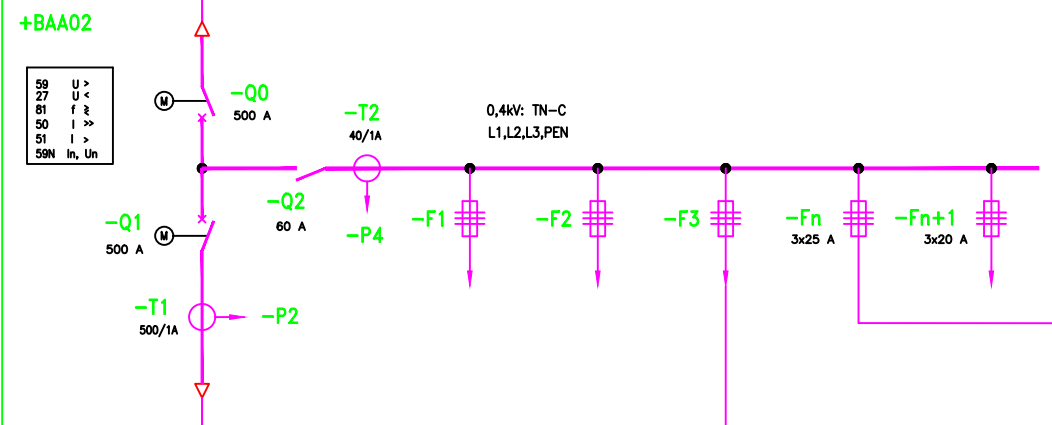


SCOPE OF LOT E
MEJA OBSEGA LOT E

MEJA OBSEGA LOT TG
SCOPE OF LOT TG



| Power Supply | CPU | DI | AI | DO | TK |
|--------------|-----|----|----|----|----|
| | | | | | |
| -P4 | | | | | |
| -P2 | | | | | |



SCOPE OF LOT TG
MEJA OBSEGA LOT TG

MEJA OBSEGA LOT E
SCOPE OF LOT E

| | | | |
|----------------------------|-----------------------------|-----------------------|--|
| Sprememba: | Opis spremembe: | Datum spr.: | Podpis: |
| Investitor: | | Objekt: | mHE PESNICA PESNICA SHPP |
| Projektant: | | Del objekta/sistema: | ELEKTRARNA POWER PLANT |
| | | Vrsta načrta/prikaza: | 3. NAČRT S PODROČJA ELEKTROTEHNIKE 3. ELECTRICAL ENGINEERING DESIGN |
| | Ime in priimek: | Id. št.: | Vsebina risbe (dokumenta): |
| Vodja projekta: | Primož Hribnik, u.d.i.g | G-0167 | ENOPOLNA SHEMA SINGLE LINE DIAGRAM |
| Pooblaščen Inženir: | Tomislav Rihtarič, u.d.i.e. | E-1782 | |
| Sodelavec - projektant: | | | Vrsta projekta: DZR |
| Obdelal: | | | Številka projekta: HI1F-8011/2021 |
| Datum izdelave: | april 2022 | Merilo: | Klas. oznaka: Y U - - - - - |
| | | | Stran/strani: 1/1 |
| | | | Ident. oznaka: HI1F-6E0100 |
| | | | Spr.: |